



SUPERIOR QUALITY AND APPEARANCE

INCREASED TRANSFER EFFICIENCY

DIGITAL CONTROL

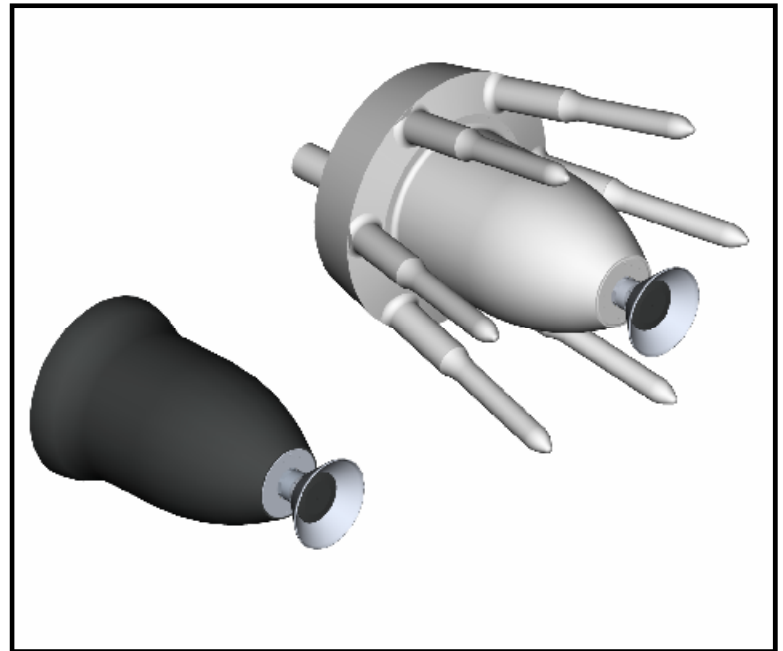
introduces the ...

FS30 Rotary Atomizer

Description

The FS30 electrostatic paint rotary atomizer has been precision manufactured to provide you with a superior finish and exceptional transfer efficiency.

The FS30 is designed to be carried by a reciprocating machine. Its unique Air Bearing Atomizer can easily obtain speeds of 70,000 rpm.



Features

- Aerodynamic Design
- Independent Dump & Trigger
- Titanium Bell Cups: 65mm, 55mm, 35mm
- Serrated, Super Sharp and Super Round Bell Cups
- Microphone or Fiber Optic Speed Control
- 100% Made in the USA
- Water Based
- Solvent Based



EFC-EMG, INC.

1325 Post Road
Havre de Grace, MD 21078
(800) 365-5897 fax (410) 939-7160

www.efcusa.com

ISO 9001:2000

QUALITY MANAGEMENT SYSTEM

General Characteristics:

Dimensions: See figures below
Weight: Approximately 11.0 lbs
Voltage: 0 to 100 kV adjusted manually or by PC analog input
Paint Regulation: 50 to 1000 cc/min by remotely piloted pneumatic input or PC control
Single Paint: Paint 1
Bell Cleaning Time: 2 seconds
Speed Readout: Fiber Optic

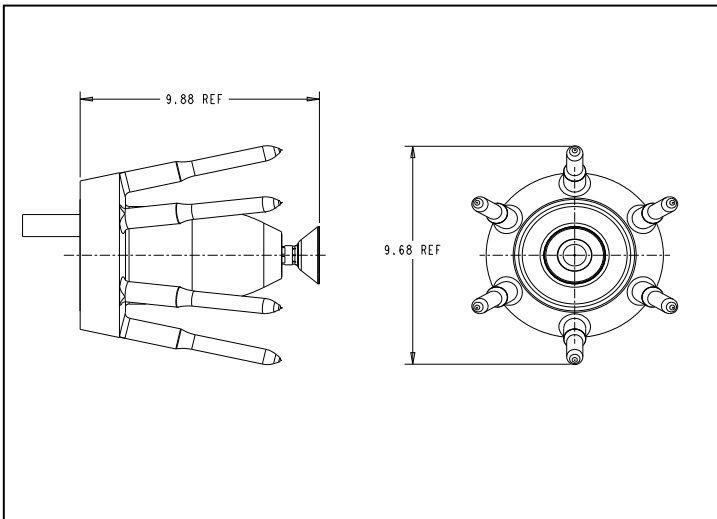
High Voltage Characteristics:

Maximum Voltage: 100kV
Maximum Current: 200 μ A

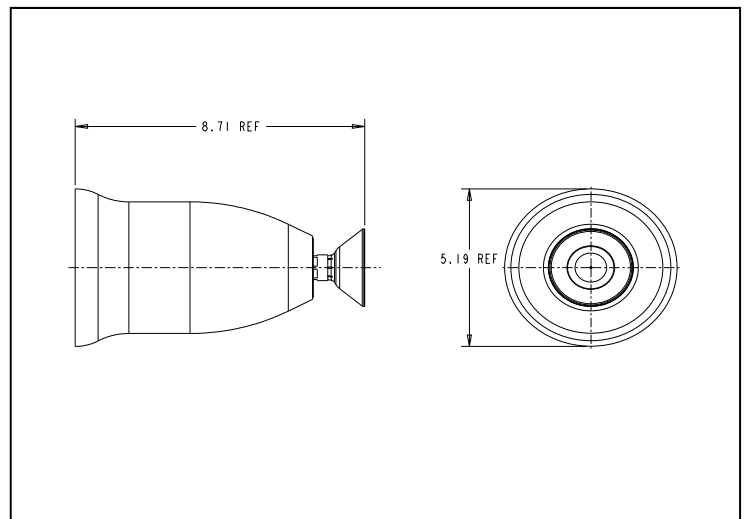
Turbine Specifications:

Turbine Type: Air Bearing Impulse Drive (Orifice Jet)
Turbine Speed: 0 – 70,000rpm (Continuous / Intermittent)
Air Consumption: at 30,000rpm, 15psi @ 5.6scfm
Bearing Air: 90psig \pm 10psig 2.0 scfm
Brake Air: 60psig

FS30-WB



FS30-SB



SYSTEMS, INC.

1325 Post Road
Havre de Grace, MD 21078
(800) 365-5897 fax (410) 939-7160