

# DUAL PURGE MANIFOLD ASSEMBLY W/ MICROVALVE DUMP

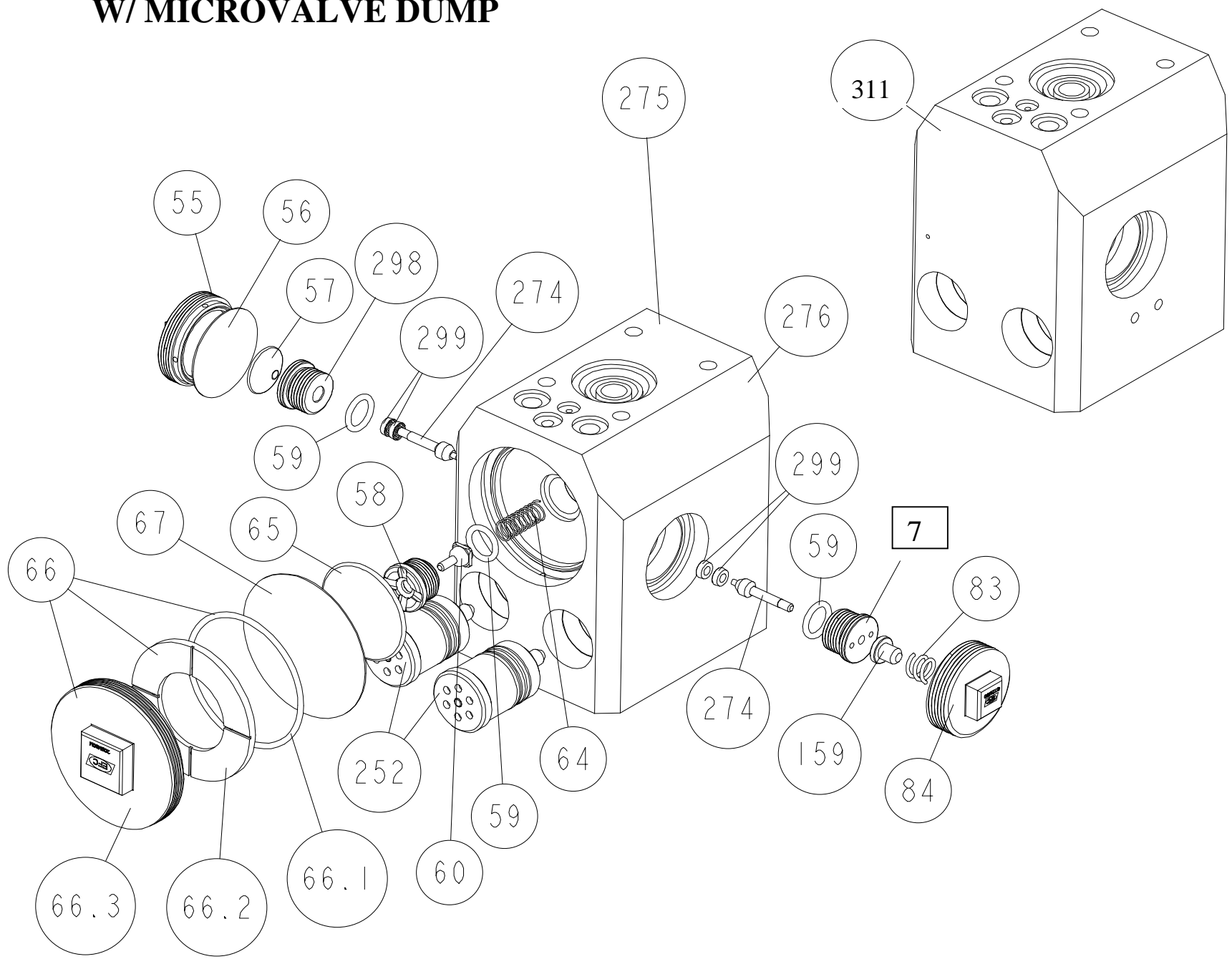


Figure 19.1

<b>DESCRIPTION</b>	<b>ITEM #</b>	<b>FIG</b>	<b>EFC PART #</b>	<b>SAMES® PART #</b>
VALVE COVER NUT, SQUARE	55	19.1	201M50M	72-0559-01
VALVE COVER NUT, 2 HOLE	55.1	19.1	201M50	449548
VALVE DIAPHRAGM	56	19.1	202M50	449549
VALVE DIAPHRAGM HOLDER	57	19.1	203M50	449546
SEAT, STAINLESS STEEL	58	19.1	211M50	742761
SEAT, COMPOSITE	58.1	19.1	30-1A22	N/A
O-RING, TEFLON®	59	19.1	1020TR	J3TTCN007
NEEDLE VALVE, STAINLESS STEEL	60	19.1	210M50	740511
NEEDLE VALVE, COMPOSITE	60.1	19.1	210M50A	N/A
REGULATOR SPRING	64	19.1	204M50	742759
REGULATOR DIAPHRAGM HOLDER	65	19.1	208M50	449545
REGULATOR COVER ASS'Y	66	19.1	205M50	435867
O-RING, VITON®	66.1	19.1	4724VR	N/A
REGULATOR COVER SPACER	66.2	19.1	205M50C	741037
REGULATOR COVER, SQUARE	66.3	19.1	205M50M	72-0559-02
REGULATOR COVER, 4 HOLE	66.4	19.1	206M50	741286
REGULATOR DIAPHRAGM	67	19.1	209M50	640265
PACKING HOLDER ASS'Y (INCLUDES #77)	76	19.1	674M60	742632
SEAL	77	19.1	30-1A28J	N/A
PUSHER SPRING	83	19.1	676M60	742631
PUSHER COVER	84	19.1	672M60	741962
PUSHER	159	19.1	673M60	741463
MICROVALVE (CHEMICALLY RESISTANT)	252	19.1	277T60CRG	1506729
SHUTTLE VALVE ASS'Y	274	19.1	30-1A28H	N/A
MANIFOLD BODY, DP, STD REG, MICROVALVE DUMP	275	19.1	30-1A28A	N/A
MANIFOLD BODY, DP, NO REG, MICROVALVE DUMP	311	19.1	30-1A31A	N/A